

On Track



The On Track Survey 2013

The Hamilton and Alexandra College

School Report

This school report provides information about the destinations of your 2012 exiting students.

On Track follows up young people in the six months after they leave school to obtain data about their post Year 12 education, training and employment destinations.

Data obtained through the *On Track* survey is used to publish post Year 12 education, training and employment destinations celebrating the broad range of outcomes schools create for young people - not just university but studying at TAFE or undertaking apprenticeships and other forms of training or employment. Those not studying or in part-time work who request additional pathway advice and support are referred to Youth Connections providers for help with their career plans.

Since 2003, more than 415,000 Year 10, 11 and 12 school-leavers have participated in *On Track* Surveys.

The first *On Track* Longitudinal Surveys followed groups of 2003 and 2004 school leavers to gain a more detailed picture of their transitions over the four years after they leave school.

The second longitudinal study began in 2008 and followed a cohort of 2007 school leavers until 2011.

Annual *On Track* Reports and the *On Track* Longitudinal Reports are available on the *On Track* website www.education.vic.gov.au/ontrack.

Data note

From year to year, schools may be assigned to another DEECD region and this may result in small discrepancies at some levels of disaggregation but not at system level.

This *On Track* school report contains tables and figures as listed below. If a table or figure has not been produced in this report, it is because there are no data for the school.

Tables

1. Response rate for the 2013 *On Track* survey
2. Destinations of Year 12 or equivalent completers who participated in the 2013 *On Track* Survey, by gender
- 2a. Destinations of Year 12 or equivalent completers who participated in the 2013 *On Track* survey and deferred tertiary study
3. Reasons for not studying, students who deferred and those who did not defer, Year 12 or equivalent completers who participated in the 2013 *On Track* survey, by gender
4. Occupations of Year 12 or equivalent completers who are working and are not in education or training, and who participated in the 2013 *On Track* survey, by gender
5. Early leavers who participated in the 2013 *On Track* survey, by year level and gender
6. Destinations of early leavers who participated in the 2013 *On Track* survey, by year level and gender
7. Reasons for not studying among early leavers who participated in the 2013 *On Track* survey, by gender
8. Occupations of early leavers who are working and are not in education or training, and who participated in the 2013 *On Track* survey, by gender
9. Destinations of Year 12 or equivalent completers who participated in the 2013 *On Track* survey, by gender: school, region and Victoria
10. Destinations of Year 12 or equivalent completers who participated in the 2013 *On Track* survey, by GAT quartile: school, region and Victoria
11. Destinations of Year 12 or equivalent completers who participated in the 2013 *On Track* survey, by SES quartile: school, region and Victoria

Figures

1. Destinations of Year 12 or equivalent completers who participated in the 2013 *On Track* survey
2. Destinations of Year 12 or equivalent completers who participated in annual *On Track* surveys, 2008-2013
3. Reasons for not studying, Year 12 or equivalent completers who participated in the 2013 *On Track* survey, school and Victoria
4. Reasons for not studying, Year 12 or equivalent completers who participated in the 2013 *On Track* survey, by gender
5. Occupations of Year 12 or equivalent completers who participated in the 2013 *On Track* survey and are not in education or training, school and Victoria
6. Occupations of Year 12 or equivalent completers who participated in the 2013 *On Track* survey and are not in education or training, by gender

2013 On Track Survey Data

This report provides a summary of the 2013 *On Track* survey data collected from two groups of students from this school.

The first group represents the Year 12 or equivalent completers from this school who completed either a VCAL Intermediate, VCAL Senior (or Senior Extension), VCE or International Baccalaureate (IB) qualification in 2012.

The second group represents students who left school in 2012 prior to successfully achieving a certificate qualification. These students are referred to as 'early leavers' in this report.

Data are presented first for the Year 12 completers, including the occupations of those who are working and reasons for not studying. Similar data are then presented for the early leavers. The final set of tables provides comparisons of post Year 12 destinations between this school, the benchmark group of schools and the State.

Table 1 Response rate for the 2013 *On Track* survey for The Hamilton and Alexandra College

Group	Number of respondents	Number of candidates	Response rate (%)
Year 12 Completers	40	48	83%
Early School Leavers	0	2	0%

Figure 1 Destinations of Year 12 or equivalent completers who participated in the 2013 *On Track* survey

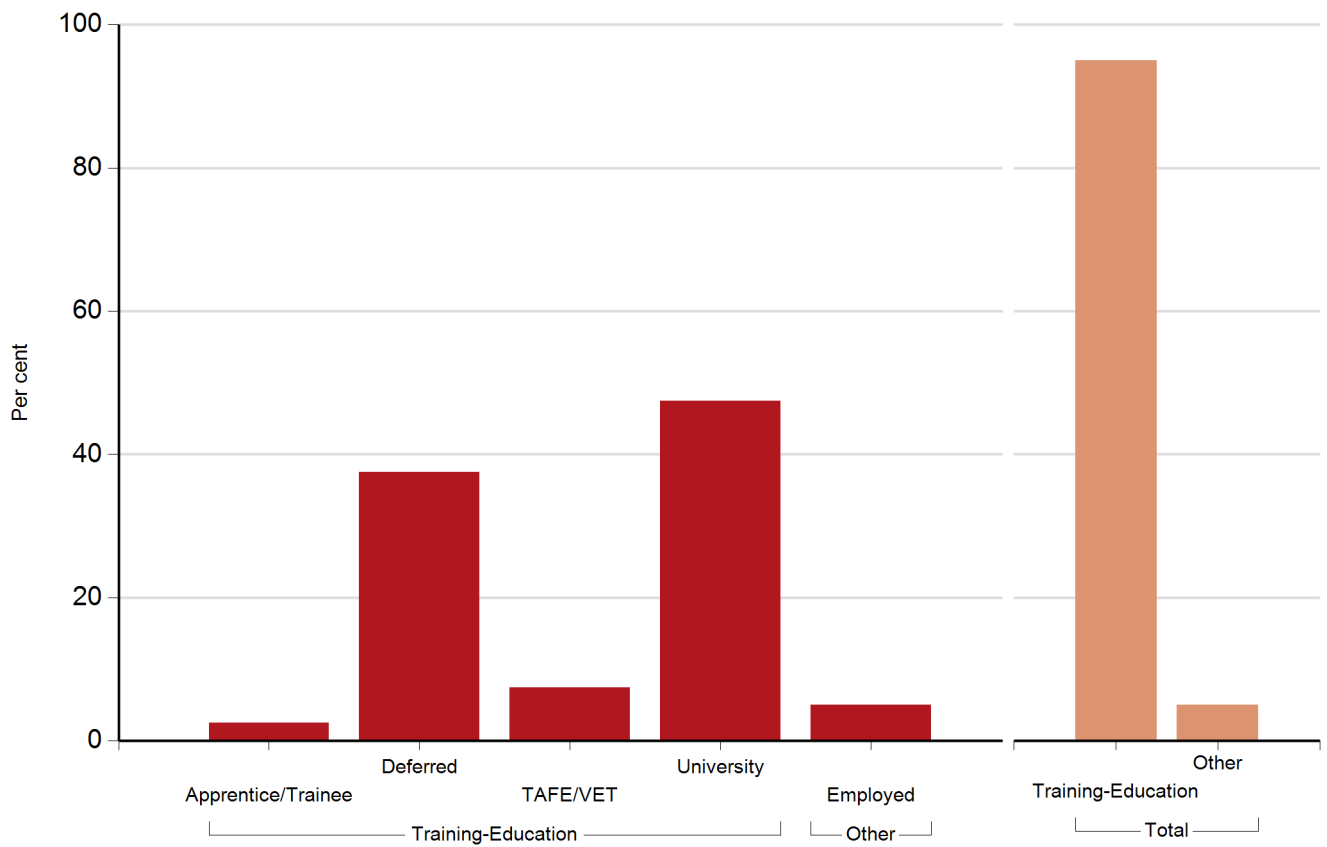


Table 2 Destinations of Year 12 or equivalent completers who participated in the 2013 On Track survey, by gender

Destination	Female		Male		Persons	
	n	%	n	%	n	%
University	11	45.8	8	50.0	19	47.5
VET Cert IV+	1	4.2	1	6.3	2	5.0
VET Entry Level	0	0.0	1	6.3	1	2.5
Trainee	0	0.0	1	6.3	1	2.5
Deferred	11	45.8	4	25.0	15	37.5
<i>Total in education or training</i>	<i>23</i>	<i>95.8</i>	<i>15</i>	<i>93.8</i>	<i>38</i>	<i>95.0</i>
Employed Full Time	1	4.2	0	0.0	1	2.5
Employed Part Time	0	0.0	1	6.3	1	2.5
<i>Total not in education or training</i>	<i>1</i>	<i>4.2</i>	<i>1</i>	<i>6.3</i>	<i>2</i>	<i>5.0</i>
Total Respondents	24		16		40	

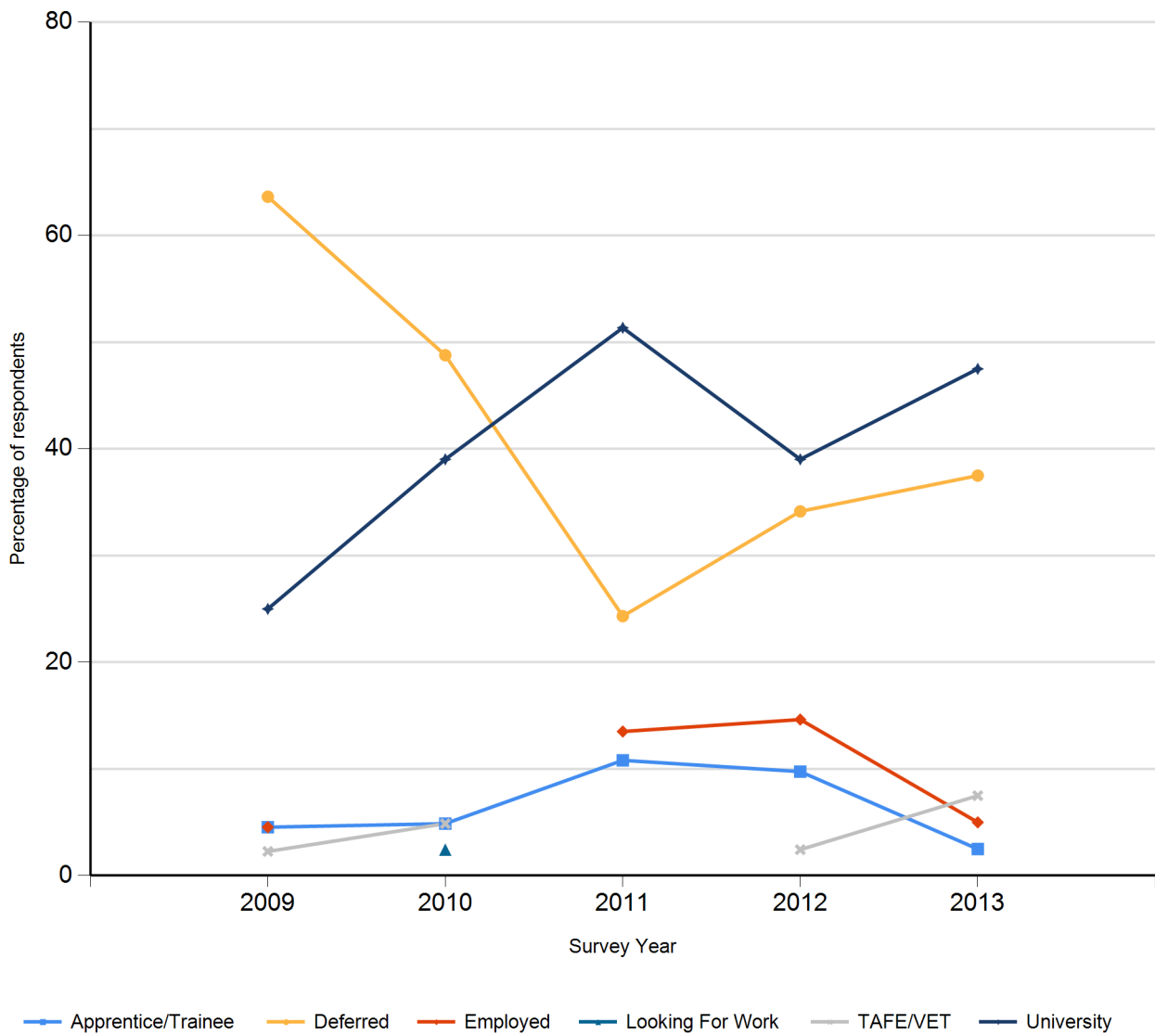
Note: See Table 2a for destinations of completers who deferred tertiary study.

Table 2a Destinations of Year 12 or equivalent completers who participated in the 2013 On Track survey and deferred tertiary study

Destination	Persons	
	n	%
Employed Full Time	9	60.0
Employed Part Time	5	33.3
Looking for work	1	6.7
Total deferrals	15	

NILFET* : Not in labour force, education or training.

Figure 2 Destinations of Year 12 or equivalent completers who participated in annual *On Track* surveys, 2009-2013



Notes: Prior to 2010, NEET (not in education, employment or training) was equivalent to NILFET.

Figure 3 Reasons for not studying: Year 12 or equivalent completers who participated in the 2013 *On Track* survey, The Hamilton and Alexandra College and Victoria

No Data Available

Figure 4 Reasons for not studying: Year 12 or equivalent completers who participated in the 2013 *On Track* survey, The Hamilton and Alexandra College, by gender

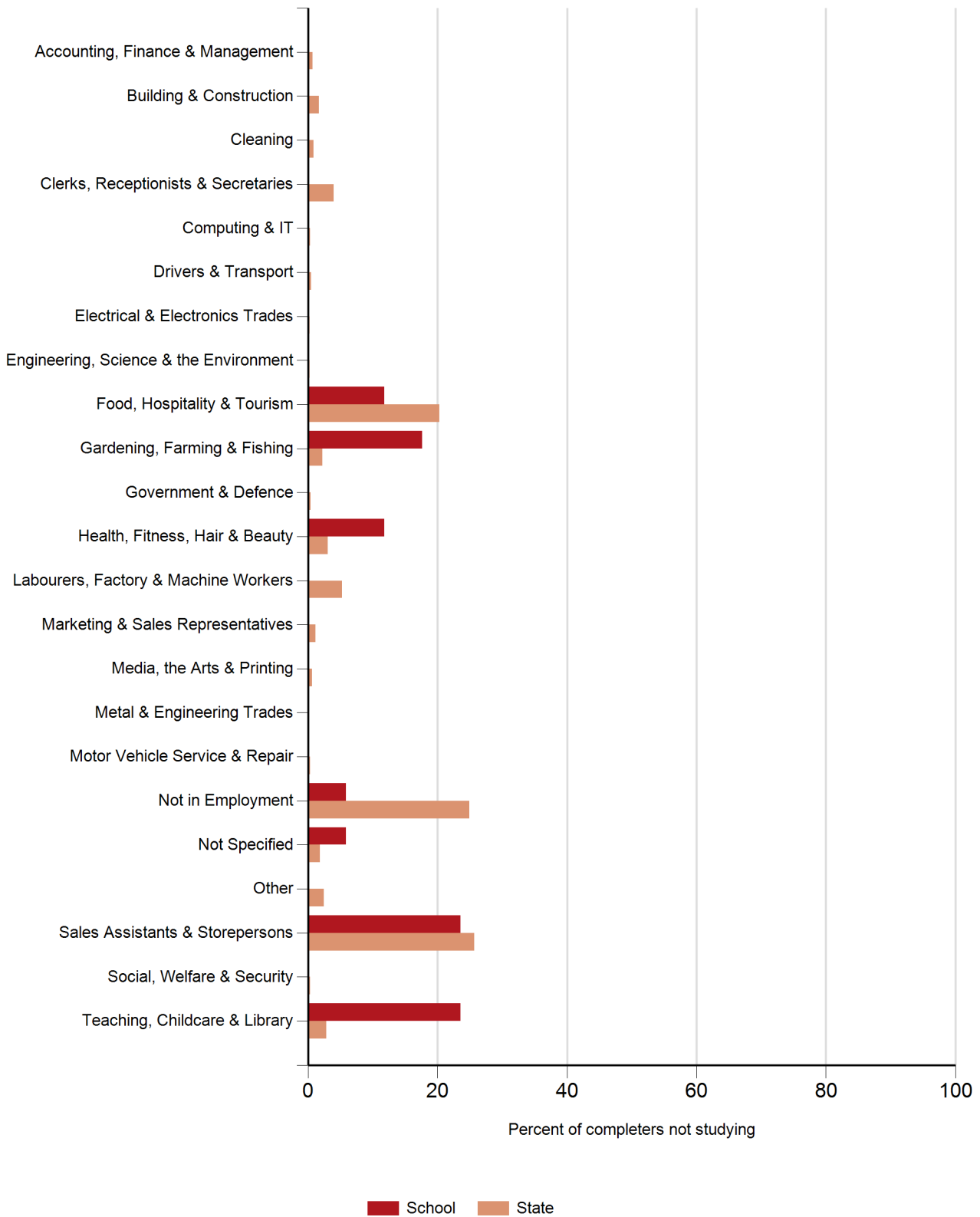
No Data Available

Table 3 Reasons for not studying: student who deferred and those who did not defer, Year 12 or equivalent completers who participated in the 2013 *On Track* survey, The Hamilton and Alexandra College, by gender

Reason for not studying
<i>Total respondents not in education or training</i>

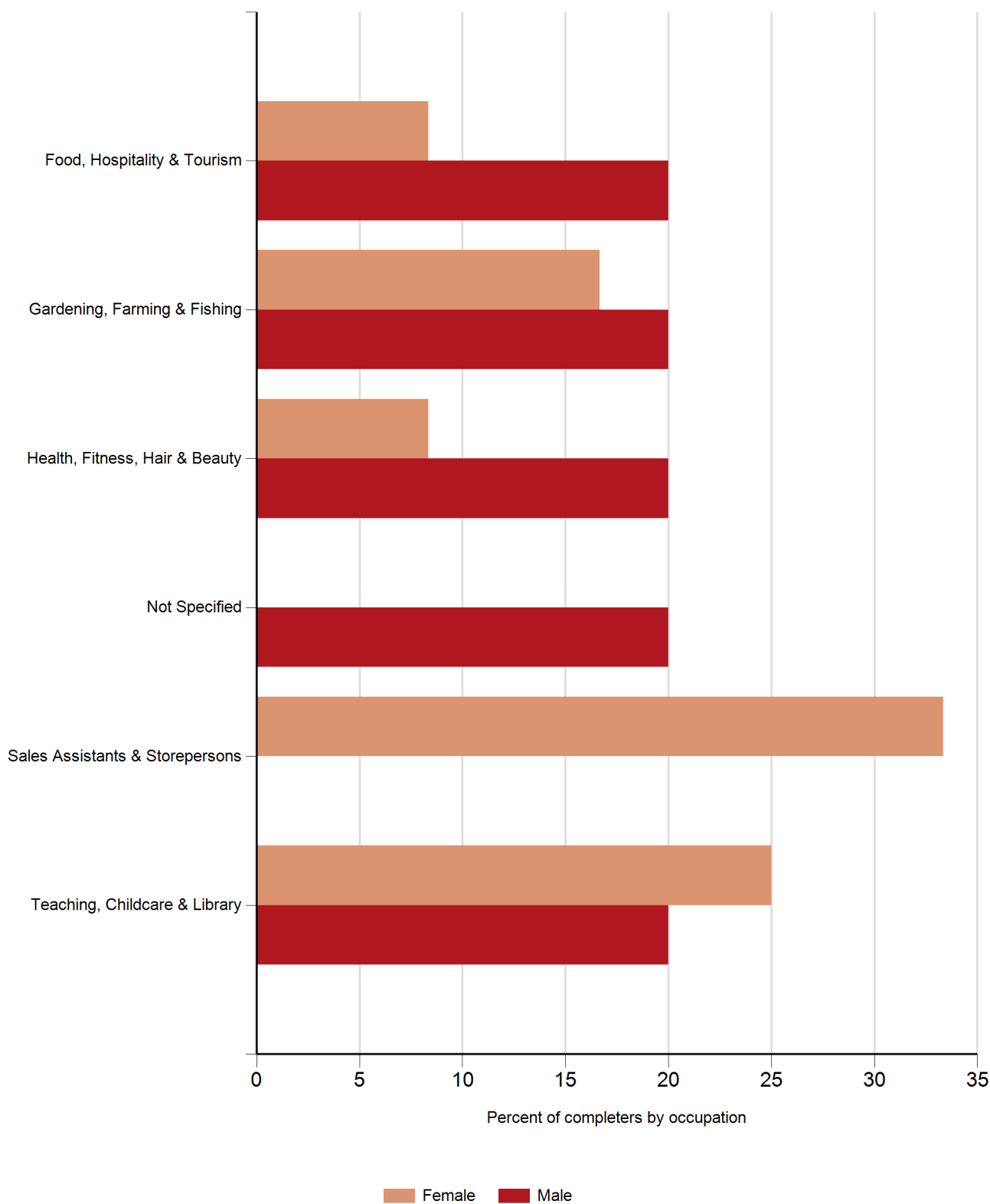
- Notes:
1. The data in this table are for all completers who are not in education or training, including those who deferred tertiary study, those who did not apply for study and those who are NILFET.
 2. Respondents may have selected more than one reason.

Figure 5 Occupations of Year 12 or equivalent completers who participated in the 2013 *On Track* survey and are not in education or training: The Hamilton and Alexandra College and Victoria



Note: The data in this table are for all those who are not in education or training, including completers who deferred tertiary study as well as those who did not apply for study.

Figure 6 Occupations of Year 12 or equivalent completers who participated in the 2013 *On Track* survey and are not in education or training: The Hamilton and Alexandra College, by gender



Note: The data in this table are for all those who are not in education or training, including completers who deferred tertiary study as well as those who did not apply for study.

Table 4 Occupations of Year 12 or equivalent completers who are working and are not in education or training, and who participated in the 2013 *On Track* survey: The Hamilton and Alexandra College, by gender

Occupation Group	Female n	Male n
Food, Hospitality & Tourism	1	1
Gardening, Farming & Fishing	2	1
Health, Fitness, Hair & Beauty	1	1
Not Specified		1
Sales Assistants & Storepersons	4	
Teaching, Childcare & Library	3	1
Total number of completers who are working and are not in education or training	11	5

Note: The data in this table are for all those who are not in education or training, including completers who deferred tertiary study as well as those who did not apply for study.

Early Leavers

Table 5 Early leavers from The Hamilton and Alexandra College who participated in the 2013 *On Track* survey, by year level and gender

Year Level	Female n	Male n	Persons n
Year 10 or Below			
Year 11			
Year 12			
Total respondents	0	0	

Table 6 Destination of early leavers who participated in the 2013 *On Track* survey, by year level and gender

Destination	Year 10 or Below		Year 11		Year 12	
	Female n	Male n	Female n	Male n	Female n	Male n
Total respondents	0	0	0	0	0	0

Table 7 Reasons for not studying among early leavers from The Hamilton and Alexandra College who participated in the 2013 *On Track* survey, by gender

Reason for not studying

Note: Respondents may have selected more than one reason.

Table 8 Occupations of early leavers who are working and are not in education or training, and who participated in the 2013 *On Track* survey, The Hamilton and Alexandra College, by gender

Occupation group

Table 9 Destinations of Year 12 or equivalent completers who participated in the 2013 *On Track* survey, by gender: school, benchmark group and Victoria

School: The Hamilton and Alexandra College

Benchmark Group: Barwon South Western

Destination	Female				Male				Person			
	School		BM	State	School		BM	State	School		BM	State
	n	%	%	%	n	%	%	%	n	%	%	%
University	11	45.8	43.7	56.6	8	50.0	39.5	49.4	19	47.5	41.6	53.2
VET Cert IV+	1	4.2	11.1	12.1	1	6.3	8.5	12.2	2	5.0	9.9	12.1
VET Entry Level	0	0.0	5.3	4.0	1	6.3	3.5	3.2	1	2.5	4.4	3.7
Apprentice	0	0.0	2.4	1.4	0	0.0	12.4	8.7		0.0	7.3	4.8
Trainee	0	0.0	5.6	2.7	1	6.3	3.5	1.9	1	2.5	4.6	2.3
Deferred	11	45.8	15.6	10.5	4	25.0	12.0	8.6	15	37.5	13.9	9.7
Total in education or training	23	95.8	83.7	87.4	15	93.8	79.5	84.0	38	95.0	81.6	85.8
Employed Full Time	1	4.2	3.1	2.6	0	0.0	6.9	4.2	1	2.5	5.0	3.4
Employed Part Time	0	0.0	10.0	6.9	1	6.3	8.6	6.8	1	2.5	9.3	6.8
Looking For Work	0	0.0	2.5	2.8	0	0.0	4.6	4.5		0.0	3.6	3.6
NILFET	0	0.0	0.6	0.4	0	0.0	0.4	0.5		0.0	0.5	0.5
Unknown	0	0.0	0.1	0.0	0	0.0	0.0	0.0		0.0	0.0	0.0
Total not in education or training	1	4.2	16.3	12.6	1	6.3	20.5	16.0	2	5.0	18.4	14.2
Total Respondents (n)	24		1342	18109	16		1275	15662	40		2617	33771

- Notes:
1. Bachelor degree includes study at universities, TAFE institutions and private providers.
 2. Certificate IV+ includes Certificate IV, Diploma, Advanced diploma and Associate degree.

Table 10

Destinations of Year 12 or equivalent completers who participated in the 2013 *On Track* survey, by GAT quartile: school, benchmark group and Victoria

School: The Hamilton and Alexandra College

Benchmark Group: Barwon South Western

Destination	Highest				Second Highest				Second Lowest				Lowest			
	School	BM	State		School	BM	State		School	BM	State		School	BM	State	
	n	%	%	%	n	%	%	%	n	%	%	%	n	%	%	%
University	9	42.9	66.2	81.6	5	41.7	59.9	69.1	5	71.4	40.8	51.7	0		21.4	28.1
VET Cert IV+	0	0.0	3.3	2.8	2	16.7	5.9	7.2	0	0.0	12.9	14.8	0		15.0	22.7
VET Entry Level	0	0.0	1.3	0.8	1	8.3	2.6	1.4	0	0.0	4.2	3.3	0		7.0	6.6
Apprentice	0	0.0	1.1	0.7	0	0.0	2.6	1.8	0	0.0	4.2	3.3	0		10.1	6.6
Trainee	1	4.8	3.3	1.1	0	0.0	3.7	1.6	0	0.0	4.9	2.4	0		5.4	3.6
Deferred	10	47.6	18.7	10.0	4	33.3	15.7	11.7	1	14.3	16.8	11.1	0		10.1	8.3
Total in education or training	20	95.2	94.0	97.0	12	100.0	90.4	92.9	6	85.7	83.7	86.6	0		69.0	76.0
Employed Full Time	0	0.0	1.1	0.5	0	0.0	2.1	1.5	1	14.3	4.0	3.0	0		9.3	6.2
Employed Part Time	1	4.8	3.6	1.8	0	0.0	5.1	3.7	0	0.0	8.0	6.8	0		15.7	11.4
Looking For Work	0	0.0	0.9	0.6	0	0.0	2.1	1.7	0	0.0	3.9	3.1	0		5.3	5.6
NILFET	0	0.0	0.4	0.1	0	0.0	0.3	0.3	0	0.0	0.3	0.3	0		0.8	0.8
Unknown	0	0.0	0.0	0.0	0	0.0	0.0	0.0	0	0.0	0.1	0.1	0		0.0	0.0
Total not in education or training	1	4.8	6.0	3.0	0	0.0	9.6	7.1	1	14.3	16.3	13.4	0		31.0	24.0
Total Respondents	21	450	7,698		12	624	7,962		7	674	7,508		645	7,894		

- Notes:
1. Bachelor degree includes study at universities, TAFE institutions and private providers.
 2. Certificate IV+ includes Certificate IV, Diploma, Advanced diploma and Associate degree.

Table 11 Destinations of Year 12 or equivalent completers who participated in the 2013 *On Track* survey, by SES quartile: school, benchmark group and Victoria

School: The Hamilton and Alexandra College

Benchmark Group: Barwon South Western

Destination	Highest				Second Highest				Second Lowest				Lowest			
	School		BM	State	School		BM	State	School		BM	State	School		BM	State
	n	%	%	%	n	%	%	%	n	%	%	%	n	%	%	%
University	3	60.0	50.7	63.9	1	20.0	45.0	52.2	9	42.9	36.5	44.7	6	66.7	31.9	43.9
VET Cert IV+	1	20.0	7.1	9.9	1	20.0	11.5	13.0	0	0.0	10.0	13.8	0	0.0	9.4	13.5
VET Entry Level	0	0.0	2.1	2.0	1	20.0	3.9	4.2	0	0.0	5.9	4.5	0	0.0	6.1	5.1
Apprentice	0	0.0	5.6	3.1	0	0.0	6.7	5.4	0	0.0	7.2	5.9	0	0.0	10.2	5.9
Trainee	0	0.0	4.2	1.6	0	0.0	3.7	2.1	1	4.8	6.0	3.1	0	0.0	4.9	3.2
Deferred	1	20.0	16.0	9.8	2	40.0	11.4	8.5	10	47.6	17.5	10.5	2	22.2	12.2	10.0
Total in education or training	5	100.0	85.7	90.3	5	100.0	82.1	85.3	20	95.2	83.0	82.5	8	88.9	74.8	81.5
Employed Full Time	0	0.0	2.9	2.3	0	0.0	5.2	3.2	1	4.8	4.6	4.2	0	0.0	7.1	4.6
Employed Part Time	0	0.0	7.9	4.7	0	0.0	9.0	7.5	0	0.0	8.5	8.3	1	11.1	12.4	8.2
Looking For Work	0	0.0	2.7	2.3	0	0.0	3.1	3.4	0	0.0	3.8	4.6	0	0.0	5.1	5.0
NILFET	0	0.0	0.8	0.3	0	0.0	0.6	0.5	0	0.0	0.2	0.5	0	0.0	0.4	0.6
Unknown	0	0.0	0.0	0.0	0	0.0	0.0	0.0	0	0.0	0.0	0.0	0	0.0	0.2	0.0
Total not in education or training	0	0.0	14.3	9.7	0	0.0	17.9	14.7	1	4.8	17.0	17.5	1	11.1	25.2	18.5
Total Respondents	5	519	11,987		5	977	8,529		21	613	6,843		9	508	6,411	

- Notes:
1. Bachelor degree includes study at universities, TAFE institutions and private providers.
 2. Certificate IV+ includes Certificate IV, Diploma, Advanced diploma and Associate degree.

Additional reporting from On Track

In addition to school reports, the following On Track reports are provided annually and a range of detailed data analyses are provided on an ongoing basis.

Regional reports (government schools only)

These reports provide destination data for Year 12 or equivalent completers and early leavers, by all school regions.

TAFE reports

These reports provide destination data for Year 12 or equivalent completers and early leavers, in schools in designated TAFE catchment areas.

Statewide report

This report provides a comprehensive summary and analysis of the 2013 destination data for Year 12 or equivalent completers and early leavers. This report, and all previous annual reports, are available from the On Track website:

<http://www.education.vic.gov.au/ontrack>